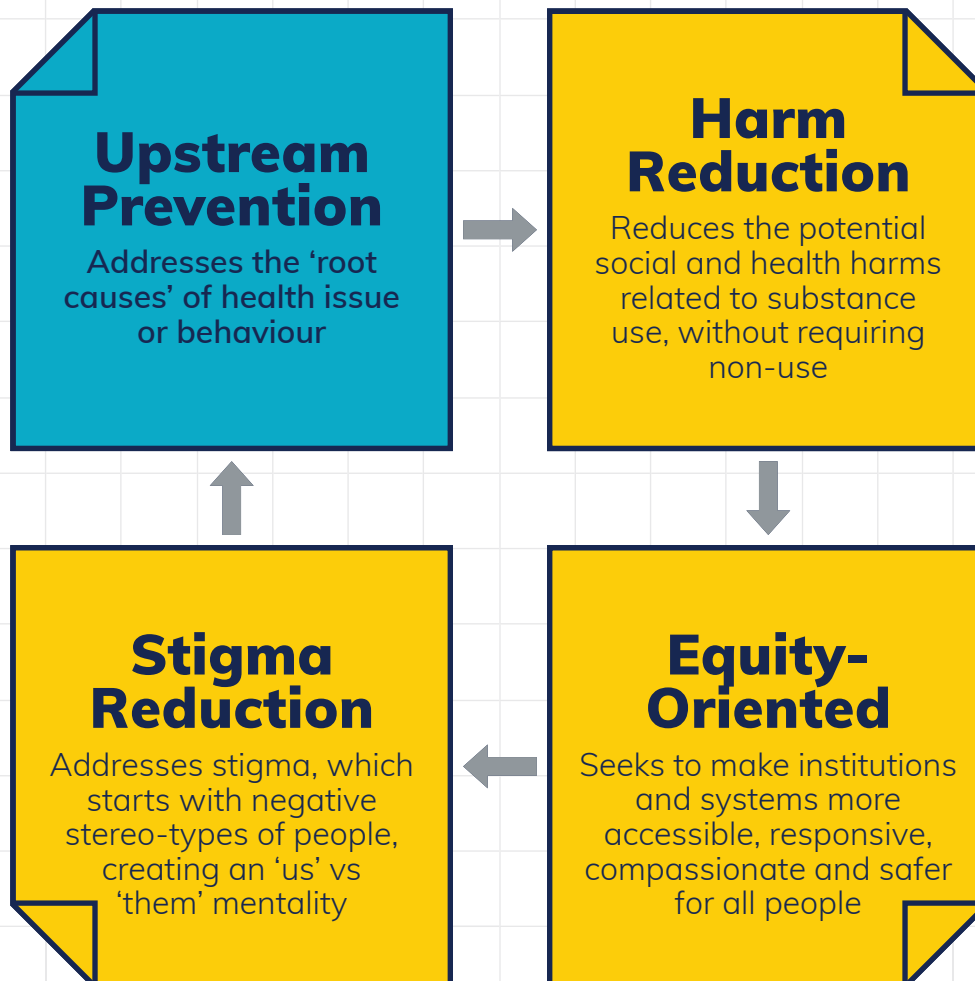


The Four Intervention Approaches for Addressing Substance Use



When addressing substance use such as vaping or smoking, it is important to remember that a one-size-fits-all approach does not work. Substance use is complex and therefore we need to seek various interventions that address these four areas:



Source: <https://www.studentscommission.ca/en/blueprint-in-action>

Footnote: These approaches were developed based on the key findings of the School Matters Forum held by the Public Health Agency of Canada.